

**Model : TT , L-TT**

(CAST IRON)

**: TT-PT , L-TT-PT**  
(DUCTILE , CARBON STEEL)

**: TT-8M , L-TT-8M**  
(SS304 , SS316)



## BUTTERFLY VALVE

*Wafer Type and Lug Type*

*Cast Iron , Stainless steel*

### Materials

| NO. | Name    | Material            | Specification |        |               |        | Remark  |
|-----|---------|---------------------|---------------|--------|---------------|--------|---|
|     |         |                     | ASTM          | DN     | EN            | JIS    |   |
| 1   | Body    | <u>Cast Iron</u>    | ASTM A126B    | GG25   | EN-GJS-250    | FC200  |   |
|     |         | Ductile Iron        | ASTM A536     | GGG40  | EN-GJS-400    | FCD450 |   |
|     |         | Carbon Steel        | A216 WCB      | GS-C25 | GP240 GH+N    | SCPH2  |   |
| 2   | Disc    | Stainless Steel     | A351 CF8M     | 1.4408 | BS970 304 S15 | SCS14  | PTFE or Nylon Coated Disc are all available   |
|     |         |                     | A351 CF8      | 1.4301 | BS970 316 S15 | SCS13  |   |
|     |         | Plated Ductile Iron | ASTM A536     | GGG40  | EN-GJS-400    | FCD450 |   |
|     |         | Aluminum Beonze     | B148-954      | C954   | EN1932 CC491K | ABLC2  |   |
| 3   | Stem    | Stainless Steel     | A351 CF8M     | 1.4408 | BS970 304 S15 | SCS14  |   |
|     |         |                     | A351 CF       | 1.4301 | BS970 316 S15 | SCS13  |   |
|     |         | Carbon Steel        | A216 WCB      | GS-C25 | GP240 GH+N    | SCPH2  |   |
|     |         | Carbon Steel        | A216 WCB      | GS-C25 | GP240 GH+N    | SCPH 2 |   |
| 4   | Seat    | Stainless Steel     | A493-410      | 1.4201 | BS970 410-S21 | SUS410 | -20°C - 80°C<br>-25°C - 100°C<br>-25°C - 130°C<br>-25°C - 110°C<br>-30°C - 120°C<br>-20°C - 200°C<br>-30°C - 70°C<br>-20°C - 150°C<br>-60°C - 250°C |
|     |         |                     | A276-304      | 1.4301 | BS970 304 S15 | SCS13  |   |
|     |         |                     | A276-316      | 1.4408 | BS970 316 S15 | SCS14  |   |
|     |         |                     | A276-316L     | 1.4401 | BS970 316L    | SCS14A |   |
| 5   | PIN     | Stainless Steel     | A182 F6A      | 1.4201 | BS970 410-S21 | SUS410 |   |
|     |         |                     | A182 F304     | 1.4301 | BS970 304 S15 | SCS13  |   |
|     |         |                     | A182 F316     | 1.4408 | BS970 316 S15 | SCS14  |   |
| 6   | Bushing | <u>PTFE</u>         |               |        |               |        |   |
|     |         | Bronze              | B62           |        |               | BC62   |   |
| 7   | O-Ring  | NBR                 |               |        |               |        | -20°C - 80°C<br>-25°C - 110°C<br>-20°C - 200°C  |
|     |         | EPDM<br>VITON       |               |        |               |        |   |

### Technical Data

| DN Nominal          |         | 2" - 40"   | 2"-32" | mm (inch) |
|---------------------|---------|--|--------|-----------|
| PN Nominal Pressure |         | 1.0  | 1.6    |           |
| Testing Pressure    | Shell   | 1.5  | 2.4    | Mpa       |
|                     | Sealing | 1.1  | 1.76   |           |
| Working Temperature |         | -15 + 150  |        |           |
| Suitable Mediums    |         | Fresh water, Sewaga, Sea water, Air, Vapour, Food, Medicine, oils, Acids, Alkalies, Salt, etc. |        |           |
| Operation methods   |         | handle, electric, pneumatic and liquid-driving   |        |           |

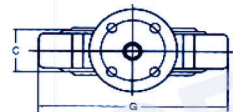
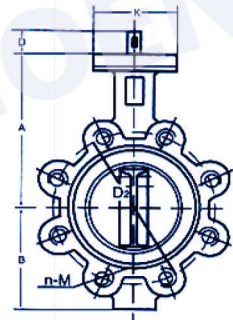
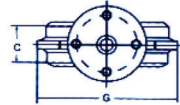
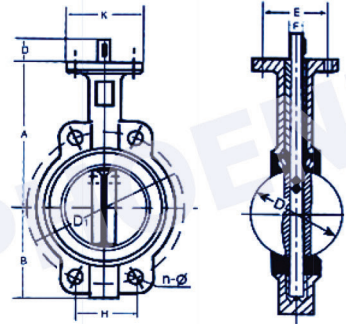
## Permitted using temperature for sealing rubber

| Rubber code                 | (NR)<br>natural-p | (JIR)<br>buta-D1 | (NBH)<br>buta-D | (CR)<br>chlo-L | (EPDM)<br>levu-Y | (SI)<br>Silicon-G | (FIPM)<br>fluorine-F | chla-alcohol |     | F4  |
|-----------------------------|-------------------|------------------|-----------------|----------------|------------------|-------------------|----------------------|--------------|-----|-----|
|                             | F1                | F2               |                 |                |                  |                   |                      |              |     |     |
| high-temperature resistance | 70                | 100              | 100             | 100            | 120              | 250               | 230                  | 100          | 100 | 200 |
| low temperature resistance  | -50               | -40              | -20             | -40            | -40              | -100              | -10                  | -30          | -30 | -30 |

## Dimension

mm

| Size | A   | B   | C   | D    | E      | F     | K   |
|------|-----|-----|-----|------|--------|-------|-----|
| 50   | 161 | 80  | 43  | 32   | 57.15  | 12.6  | 77  |
| 65   | 175 | 89  | 46  | 32   | 57.15  | 12.6  | 77  |
| 80   | 188 | 95  | 46  | 32   | 57.15  | 12.6  | 77  |
| 100  | 200 | 114 | 52  | 32   | 69.85  | 15.77 | 92  |
| 125  | 213 | 127 | 56  | 32   | 69.85  | 18.92 | 92  |
| 150  | 226 | 139 | 56  | 32   | 69.85  | 18.92 | 92  |
| 200  | 260 | 175 | 60  | 45   | 88.9   | 22.10 | 115 |
| 250  | 292 | 203 | 68  | 45   | 88.9   | 28.45 | 115 |
| 300  | 337 | 242 | 78  | 45   | 107.95 | 31.60 | 140 |
| 350  | 368 | 267 | 78  | 45   | 107.95 | 31.60 | 140 |
| 400  | 400 | 298 | 102 | 51.2 | 158.75 | 33.15 | 197 |
| 450  | 422 | 318 | 114 | 51.2 | 158.75 | 38.00 | 197 |
| 500  | 480 | 349 | 127 | 64.2 | 185.75 | 41.15 | 197 |
| 600  | 562 | 440 | 154 | 70.2 | 215.9  | 50.65 | 276 |
| 700  | 624 | 520 | 163 | 66   | 254    | 55.00 | 300 |
| 800  | 672 | 591 | 188 | 66   | 254    | 55.00 | 300 |



## Weight (kg)

mm

| Size      | Wafer | Lug  | Size      | Wafer | Lug |
|-----------|-------|------|-----------|-------|-----|
| 50 (2")   | 2.5   | 3.8  | 300 (12") | 32.5  | 40  |
| 65 (2.5") | 3.2   | 4.2  | 350 (14") | 41.3  | 56  |
| 80 (3")   | 3.6   | 4.7  | 400 (16") | 61    | 90  |
| 100 (4")  | 4.9   | 9.0  | 450 (18") | 87    | 111 |
| 125 (5")  | 7     | 10.9 | 500 (20") | 98    | 123 |
| 150 (6")  | 7.8   | 14.2 | 600 (24") | 133   | 178 |
| 200 (8")  | 13.2  | 18.2 | 700 (28") | 187   |     |
| 250 (10") | 19.2  | 26.8 | 800 (32") | 387   |     |

Flange drilling is available on request such as :

GB9112-8B, DIN2501, BS4504, ISO2084, ISO2531, BS10-E, ANSI125/150, ASA125/150, AS129 Table D/E