

Single Door Swing check valve

Cast Iron

Model : SD-18C



Materials

NO.	Partname	Material
1	Body	Cast Iron : HT20-40
2	Clapper Plate	SUS316 / SUS304
3	Hanger	Carbon steel : ZG35
4	Seal Ring	EPDM
5	Spring	Stainless steel
6	Axle	Stainless steel

Features

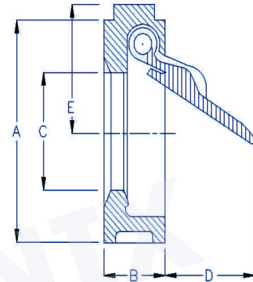
- Water type connection
- The valve are designed to prevent reverse flow automatically
- Swing Type
- Note :
- Can be adapted for different connection : PN10/16 ANSI125/150 ,JIS10K

Test Requirements

- Test and Inspection in valve class
- Hydrostatic
- Shell test 25 bar
- Seat test 16 bar
- Air test 6 bar

Application

- For General and Industrial service
- Applicable medium : Fresh water, Sea water, Waste water, Food stuff, All kinds of oil & Acid Alkaline liquid
- Max working pressure : 16 bar
- Max working temperature : -10°C + 110°C



Dimension

mm

Size	2	2 1/2	3	4	5	6	8	10	12
A	10.7	127	128.3	161.6	190.9	216.6	269.7	333	380.8
B	50	54	60	64	69.6	76.5	76.5	80	85.7
C	33	43	52.4	64.4	85.3	107	107	193.7	241.3
D	28	34	40.2	60	86.9	109	109	187.3	222.3
F	54.1	68	75.5	98.6	116.75	133.6	133.6	235.5	262
Wt (kg)	1.8	2.2	2.77	4.5	6.5	8.2	12	23.6	34.4