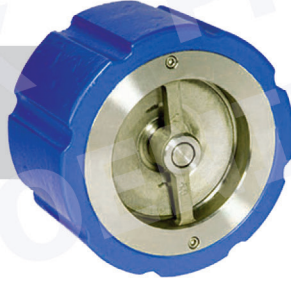


## SILENT CHECK VALVE

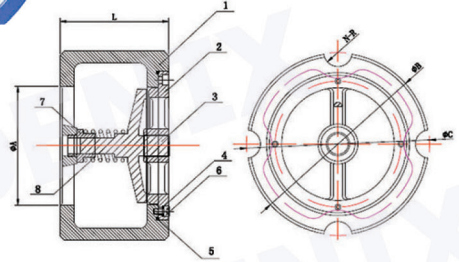
Cast Iron

Model : SLN-73



### Materials

NO.	Partname	Material
1	Body	GG25 Cast Iron
2	Guide	304 / 316
3	Disc	304 / 316
4	Rubber ring	NBR EPDM
5	Seat	NBR EPDM
6	Bolt	Stainless steel
7	Axle sleeve	Stainless steel
8	Spring	Stainless steel



### Working Pressure - NON - SHOCK

Steam : Not recommended

WOG : 200PSI @ 100°F (13.7 bar @ 66°F)

### Installation

Equally effective installed vertically, horizontally or at any angle. Consult factory for vertical flow downward. We strongly suggest the installation of a strainer in the piping, located before the pump. This inexpensive measure will ensure protection for both the pump and valve.

### Dimension

mm

Size	2	2 1/2	3	4	5	6	8	10	12
L	67	73	79	102	117	140	165	210	286
ØA	59	80	84	112	130	164	216	250	300
ØB	108	127	146	174	213	248	340	406	482
ØC	120	140	148	180	210	243	298	357	408
n-R	4-R10	4-R10	4-R10	4-R10	8-R11.5	8-R12.5	8-R12.5	12-R15	12-R15
FLANGE	67	120	140	170	200	230	301	370	370