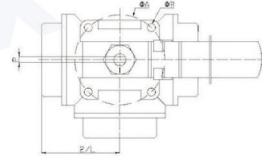


Model : 3W-R8



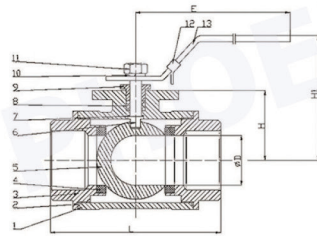
3 WAY BALL VALVE

Stainless steel



Materials

NO.	Partname	Material
1	Body	CF8M / CF8
2	Body gasket	PTFE
3	Cap	CF8M / CF8
4	Seat	PTFE / RPTFE
5	Ball	CF8M / CF8
6	Stem	SS316 / SS304
7	Thrust washer	PTFE
8	Stem packing	PTFE
9	Stop nut	SS201
10	Spring washer	SS201
11	Stem nut	SS201
12	Locking device	SS201
13	Handle	SS201



Features

- Investment casting body
- 3 way body design, T/L
- Pipe threaded in accordance : BSPT

Application

- For General and industrial service
- Applicable Medium : Water ,Oil ,Gas

Maximum Pressure	600PSI (40 Bar)
Shell Test Pressure	900 PSI (60 Bar)
Applicable Temperature	-10-150° C

Dimension

mm

Size	1/2"	3/4"	1"	1 1/4"	1 1/2"	2"
E	120	120	160	160	175	175
H	28	33	35.50	44.50	52	57
H1	60.5	60.5	71	80	95.5	100.5
L	72	80	87	112	132	145
P	5	6	7	7	9	9
ØA	36	42	42	42	50	50
ØB	M5	M5	M5	M5	M6	M6
ØD	12	15	18	25	32	38