

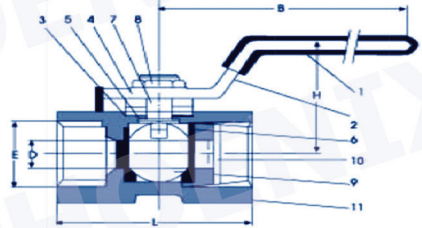
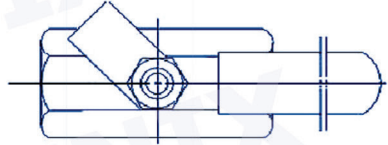
BALL VALVE (1-PC)

Stainless steel

Model : 188-S
: 188-SS

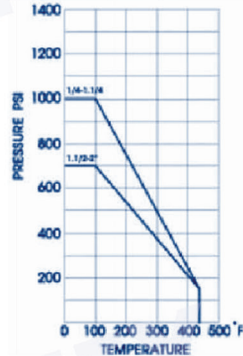


Blow-out proof stem / Reduce bore
Investment casting body 800PSI (55 Bar W.O.G)
/1000PSI (69 Bar W.O.G)
Material : ASTM-CF8M A351. ASTM-CF8 A351



Materials

NO.	Partname	304	316
1.	Plastic cover	Plastic	Plastic
2.	Handle	SUS304	SUS304
3.	Thrust washer	Teflon	Teflon
4.	Packing ring	SUS304	SUS304
5.	Stem packing	Teflon	Teflon
6.	Seat	PTFE	PTFE
7.	Stem	SUS316	SUS316
8.	Stem nut	SUS304	SUS304
9.	Ball	SUS304	SUS316
10.	Inscrewed part	SUS304	SUS316
11.	Body	SUS304	SUS316



Dimension

Size	D	L	H	B	Cv FACTOR	Torque Inch/LBS	Wt(kg)
1/4	5	40	33	60	4.0	12	0.07
3/8	7	45	36	67	4.0	12	0.11
1/2	10	58	42	90	4.5	12	0.17
3/4	13	60	45	90	9.0	18	0.25
1	16	72	52	112	16.0	36	0.40
1 1/4	20	80	57	112	24.0	54	0.67
1 1/2	25	85	60	132	37.0	72	0.82
2	32	102	66	132	68.0	84	1.30